

2020

Welcome to

The Condor Collection



Reach for the top



One Story Single Wide



12x24 Vinyl A-Frame Garage
Cream with white trim, tan roof, red shutters
Optional cupola, sunburst glass in garage door

Dear Sam,

I am very pleased with the quality of construction and overall looks of the shed. I look forward to putting it to good use.

It was a pleasure dealing with your company, and I will be sure to recommend you to my family and friends.

*Best regards,
Jim L.*



12x24 Vinyl A-Frame Dormer Garage
Light gray with blue trim, dual gray roof
Optional dormer



14x24 Vinyl A-Frame Garage
White with red trim, optional tin roof



12x24 Duratemp A-Frame Garage
Clay with beige trim, green shutters, weatherwood roof
Optional Stockton long panel glass in garage door



12x24 Vinyl High Wall Dutch Barn Garage
Clay with green trim, weatherwood roof

Two Story Single Wide



12x20 A-Frame Vinyl Chalet

Two stories with stairs, 12/12 roof pitch, stone front, wood stain, 12-lite windows, 6' wood 9-lite double door, vinyl shutters, hinged gables for easy on site set-up, 24" window cupola

Optional double Azek door, transom on gable and weathervane

Hi Jake,
I just wanted you to know how happy we are with the garage you built last week. It was such a pleasure to see the dedication and real joy the crew had.

It took us seven years to build our dream home in the mountains, but only three days for J & M to build our dream garage!! On time and in target.

Thanks to you and your team.
Kevin L.

Interior Loft



12x16 A-Frame Dormer - Deluxe

Barn Red LP lap siding with white trim and charcoal gray roof

Optional dormer, 11/12 pitch roof, transom windows, extra double door, cupola and moonlight vents



12x24 New England Duratemp Garage

12/12 roof pitch, hinged gable for easy on site set-up, peak over false door, clay siding, beige trim, black shutters, architectural weatherwood roof

Optional false hay door, clay garage door (white standard)



14x24 Deluxe Two-Story Barn

Avocado siding, beige trim, black shutters, architectural black roof

Williamsburg Two Story Barn



14x24 Two-Story Dormer Barn

Duratemp siding, roof built on site

Option: garage door

Features: Stockton LP glass
homestead 9'x7'6" garage door





Interior Jefferson



16x24 Williamsburg Two-Story Dormer Barn

*Optional extra garage door, Old Heritage Cedar stain
Optional extra entry doors, Old Heritage Cedar stain
Optional outside stairs*



Interior Two-Story Barn



Interior Williamsburg

One Story Double Wide

24x24 Double Wide Garage
Cedar siding



24x38 Double Wide Garage
Roof built on site, vinyl clay siding, dark gray trim, green shutters, architectural charcoal gray shingles

Options: sunburst glass in garage doors, clay painted double doors, cupola



Two Story Dutch Garage



Two-Story Double Wide Dutch Barn

Red Duratemp siding, roof assembled on site,
white trim, architectural black roof



First floor with stairs



Plenty of second floor headroom



30x40 and 16x40 A-frame

Two story, garage, house 33' row dormer with pent roof, LP lap siding painted Stoltzfus tan
Chestnut wood trim, 9' walls 12/12 roof pitch
3-12x8 insulated Homestead garage door with LP Somerton glass brown



24x24 Jefferson Two-Story

Cedar siding with optional green metal roof
no garage door

Two Story Double Wide



24x24 Garage

Vinyl siding, double wide hinged roof for easy on site set-up, comes in two pieces, full second story with stairs



Second story 24x24 hinged roof



Nice storage for your valuables

1&2 Story Double Wide



24x24 Two-Car Double Wide, Two-Story Garage

Duratemp, hinged roof for easy on-site set-up,
6/12 roof pitch, four windows in first floor, four windows in second floor
Martin creme, white trim, red shutters, architectural tan roof



Need more storage? Have a double wide built on site, custom designed to your specific needs and compliant with local building codes. Buildings are engineered for a lifetime of use.

Yes, you can have a garage delivered and finished in a single day!



28x28 Allentown One-Story Saltbox Garage

Clay LP lap siding with black wood trim and weatherwood roof

Optional 9'x8'9" wood garage door stained cedar Hardie Plank board and batten stained and 9' high wall



26x42 Three Bay Garage

On-site construction, 6/12 roof pitch trusses

Optional 10' walls, 9' high garage doors with sunburst



24x30 One-Story A-Frame

Sand vinyl siding with white trim, black shutters, tan roof, 8' wall and 6/12 trusses

Optional French door, window trim and extra windows



22x28 A-frame One-Story

Log siding with 11x18 attic trusses, 8' walls, 12/12 roof pitch, 10'x7'-6" wood garage door, with 12-lite glass.



24x36 Three Bay Garage

Built on site, vinyl siding, standing seam roof, 9'x7'6" garage doors, Stockton glass LP

1 & 2 Two Story Car Garages



18x22 Boston - Windsor (Two-Story)

Avocado Duratemp with beige trim, 5' double door with carriage windows and long hinges, Hamilton shutters, dual black roof, front porch, reverse A-peak on front, row dormer on back of second floor, TJI floor system, and 12/12 (2x10) rafter roof pitch

Optional post and beam front porch, homestead garage door stained old heritage mahogany with Summerton glass



Homestead Garage Door
Summerton Glass
Heritage Hardware
Stained with old heritage mahogany



Steel Garage Door



Spacious second floor



26x40 Dutch Barn Two-Story

LP lap siding painted barn red, barn red trim, charcoal gray roof, 3-4'7" wide dormers, 6' wide sliding patio door with special order sliding protective wood doors with trim



24x24 Dutch Barn Two-Story

Duratemp siding painted avocado, clay trim, wood three slat shutters painted barn red, weatherwood roof, prawl on gable end over, 6' wide French steel door with 15-lite glass with special order hinged protective door



28x62 Boston Two-Story

Hardie plank siding painted barn red, barn red trim with wood Z-style shutters painted buckskin, driftwood roof, 12/12 roof pitch, 48" window cupola with concave copper roof, 38x57 windows



Custom size and colors



36x40 Horse Barn

With full second floor loft, 34'-8" row dormer with pent roof, board & batten siding stained soy-rustic, cedar, black trim, charcoal gray shingles, 8/12 roof pitch, two 12'x9' sliding barn doors, 9' walls, 48" pine cupola, with windows and concave copper roof



12x48 Horse Barn

With 10x48 lean-to, soy board & batten siding, soy rustic cedar trim, dual brown roof, four 12'x10' stalls with 4' Dutch doors, four windows with grills, one 12'x8' tack room with pt floor with two access doors to stalls



48" wide wood stall sliding doors with V opening grates, black metal grates on front of stalls and stall partition walls, 4' high kickboard in stalls



To our friends at BarnCo:

We're writing to let you know how happy we are with our new shed. It fits so well into our landscaping and matches our house perfectly – siding, shingles and shutters. My son, who is a carpenter, said the shed was very well made and we probably couldn't have built it ourselves any cheaper. We have gotten so many compliments from our friends and neighbors. And, of course, we tell them that we purchased our shed from BarnCo.

We are very pleased not only with our shed, but with the courteous service we received from everyone we dealt with in your company. We will be sure to come back to you for our next purchase.

*Sincerely,
Howard and Sandra R.*

28x62 Two-story

Two 18' dormers painted buckskin with 36x40" windows with 12x40" side lites and 36" half round windows, two 18'x12' garage doors painted sandstone, insulated with LP Stockton glass, one 9'x12' garage door painted sandstone, insulated LP Stockton glass, 11' walls on 4' foundation block



24x24 Jefferson (Two-story)

Avocado LP lap siding with clay trim, Hamilton shutters painted Navajo white, dual black roof, 2 - frame out dormers, row dormer in back, TJI floor system and engineered trusses with 12/12 roof pitch

Optional French door and homestead garage door



First floor with stairs



Back side of Jefferson with optional French doors

1, 2 & 3 Car Garages - Two Story



24x24 Kingston (Two-Story)

Navajo white Duratemp with clay trim, Hamilton shutters painted hunter green, weatherwood roof, 6'4½" knee wall on second floor, TJI floor system, and engineered trusses

Optional extra windows and transoms



Kingston Pent Roof



28x38 Providence (Two-Story)

Red HardiePlank siding with red trim, weatherwood roof, TJI floor system, engineered trusses with 12/12 roof pitch, 9' high walls, custom colored garage doors, and transom windows above garage door

Optional window cupola



I was treated very professionally, and in a friendly, manner. The goods were delivered promptly and accurately. The prices are incredible.

Joe S.

24x24 Greenwich (Two-Story)

Almond vinyl siding with clay trim, raised panel green shutters, tan roof, vinyl insulated windows, row dormer in back of second floor, reverse A-peak on front, TJI floor system, engineered trusses with 12/12 roof pitch, cedar shakes on garage front, and Hardie stucco on A-peak with cedar trim

Optional wood 12-lite stained garage doors



24x24 Two-Story Boston

White vinyl siding, white trim, Harvard slate roof, blue raised panel shutters, 30x40 with half-round windows, 30x36 windows, two 9'x7' insulated homestead garage doors with Summerton LP gloss white



18x22 Boston (Two-Story)

White vinyl siding with white trim, white shutters, dual gray roof, TJI floor system, 12/12 (2x10) rafter roof pitch, reverse A-peak on front, and row dormer in back of second floor

Optional moonlight vents and homestead garage doors

2 Story Star Barn



Custom Cupola



19x23 Single Wide Two-Story
Mortise and tenon framing with board and batten siding,
custom stain, custom paint

This barn was custom built on site.



Mortise and tenon framing



20x24 Allentown One-Story Saltbox

Cedar siding, soy-cedar stain, soy-cedar trim, dual black roof, 24" overhang on front, 8/12 pitch on front roof, 5/12 pitch on back roof, two 9x7 insulated brown garage doors with standard glass



18x22 Two-Story Boston - Value Package

Barn red Duratemp siding with white trim, black shutters and black roof

*Optional round double door, cupola,
homestead option for garage door, and moonlight vents*



1x6 T&G Pine Interior



1x6 T&G Pine Interior



Vinyl Interior Sunroom



1x6 T&G Pine Interior



Cedar Paneling Interior



18x36 A-frame Pool House

Cedar siding stained soy-cedar,
soy-cedar trim, soy-cedar shutters,
earthtone cedar roof, 8x18
screened porch,
7/12 pitch, 7'-4½" walls



30x30 Custom Pavilion

With cedar shake roof



V-groove 1x6 T&G Pine



Reg Fir Flooring



Edge & Center Bead 1x6 Pine



Bamboo Flooring



Cedar Paneling



Linoleum Flooring

Two Story Garages



24x24 Two-Story A-Frame
Classic linen vinyl siding with white trim and scarlet red metal roof

Optional two row dormers, 12/12 pitch, 11-lite French doors, metal roof, 30" custom cupola and 10'x10' deck



24x24 A-frame Two-Story
19' row dormer, white vinyl siding with special order clay front, two white garage doors with standard glass



24x24 Two-Story Jefferson

Prairie wheat vinyl siding with white trim, black shutters, black roof
Optional 2' knee wall, no TJs, triple window with half moon, homestead option on garage door



40x60 One-Story A-frame
 20x60 attic trusses, cream vinyl siding, white trim, black raised panel shutters, black roof, two 14'x12' white garage doors, 40x60 windows, 8/12 roof pitch, 15' walls, 36" classic series cupola with concave copper roof



22x24 Two-Story Lakeside
 Barn red Duratemp siding with almond trim and metal roof, 14' wide garage door and 14/12 pitch roof
Optional cupola



Back view of Lakeside

Catering Halls





Cozy Swan Project



The Sweet Shop



The Pro Shop

Tiki Bar



Features and Upgrades

Garage Doors



Arctic White



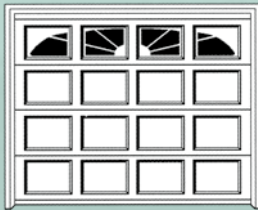
Almond



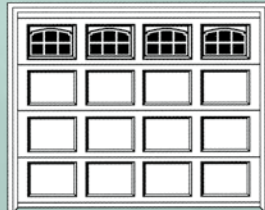
Deep Brown



Sandstone



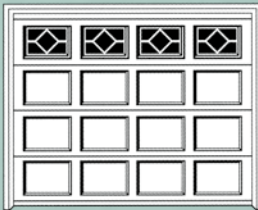
SP-Sunburst



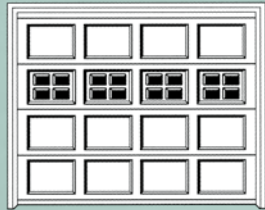
SP-Cascade



Homestead garage door with hardware



SP-Waterton



SP-Stockton



Homestead Summerton LP



Homestead Cascade LP



Homestead Stockton LP



Standard Glass

Kit Packages

Kits are shrink-wrapped for weather resistance and safer transporting.



Aluminum Diamond Door Plate



Vinyl Shake Style Siding



5' Ramp



Doors



17 Lite Full Arch Glass



Solid



Sunburst



9-Lite



11 Lite Arch Glass



Full Glass

Windows



Wood Carriage



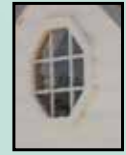
Wood Heritage



Double Window Sunburst



Queen Window



Wood Octagon Window



Jamestown Window Trim, Hamilton Shutters



30"x36" Aluminum window with optional raised panel shutters



#104-AB 24"x36" Aluminum or 18"x36" Vertical Slider



Double Window



Wood Z Shutter



18"x36" Aluminum Window with standard shutters. Optional flower box



#105-AW 30"x36" Aluminum Vertical Slider

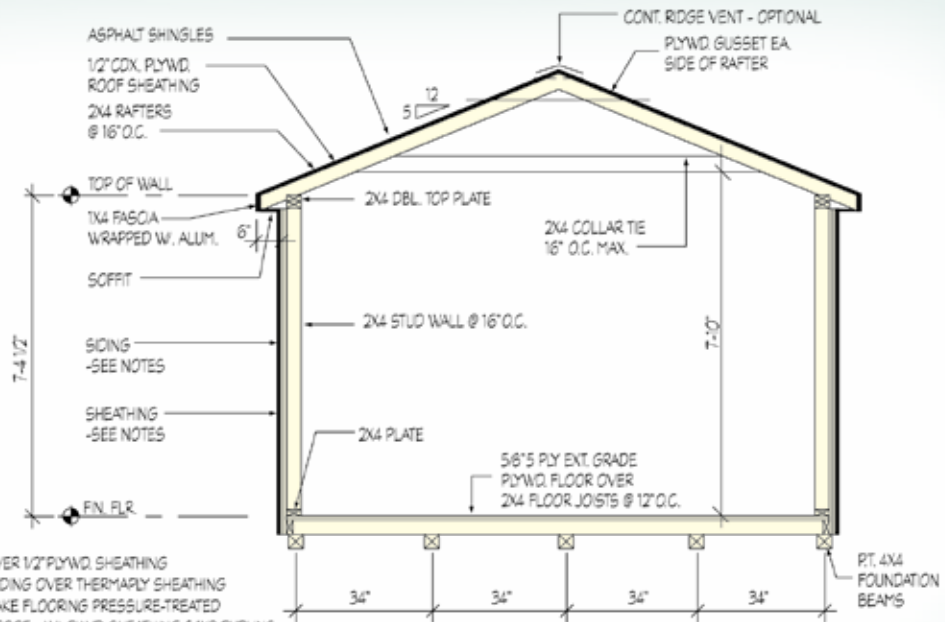


Double Window



Wood Door with a Transom Window

SERIES 12
A-FRAME GARAGE
BUILDING SECTION



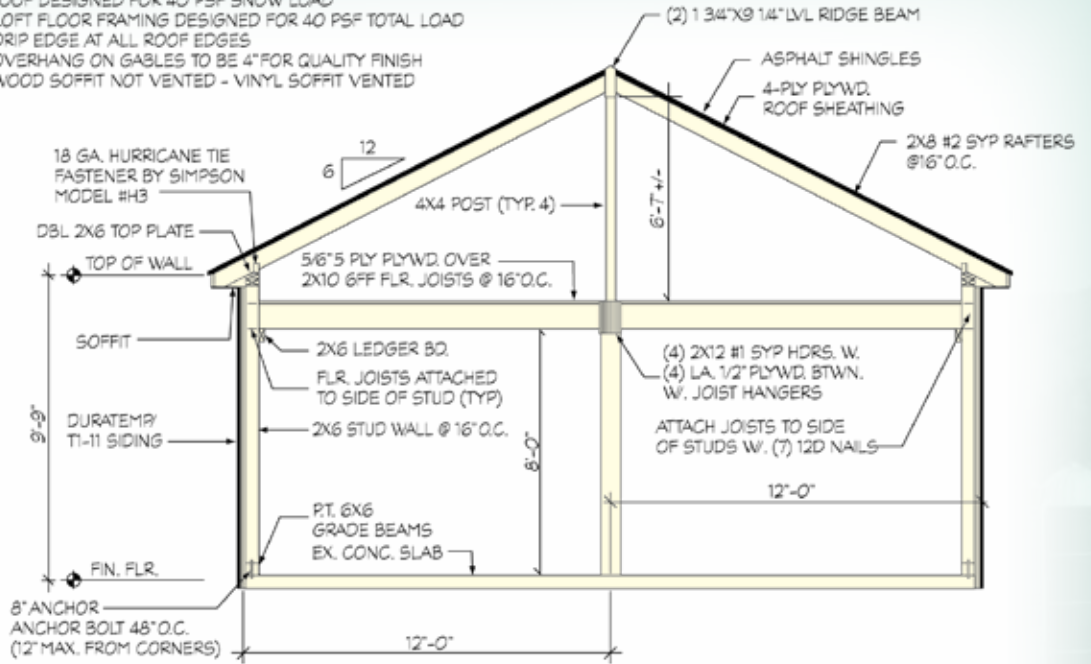
- GENERAL NOTES:**
1. VINYL SIDING OVER 1/2" PLYWD. SHEATHING
 2. PINE & CEDAR SIDING OVER THERMALLY SHEATHING
 3. OPTIONAL TO MAKE FLOORING PRESSURE-TREATED
 4. OPTIONAL MTL. ROOF - W. PLYWD. SHEATHING & 1x3 PURLINS
 5. STANDARD 5/12 PITCH - OPTION TO MAKE 7/12 PITCH
 6. DRIP EDGE AT ALL ROOF EDGES
 7. OVERHANG ON GABLES TO BE 4" FOR QUALITY FINISH
 8. WOOD SOFFIT NOT VENTED - VINYL SOFFIT VENTED
 9. BUILDING FEATURES MAY VARY UPON OWNER REQUESTS

Architectural drawings available
 (Stamp and seal optional)

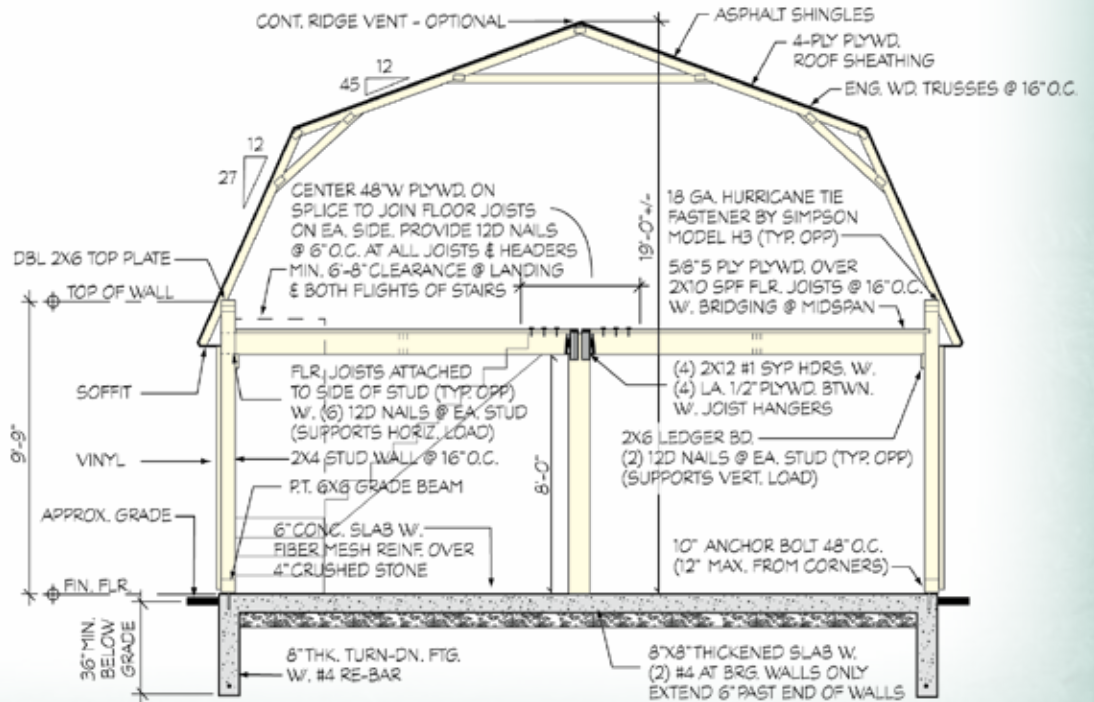
TWO STORY GARAGE
BUILDING SECTION

GENERAL NOTES:

1. ROOF DESIGNED FOR 40 PSF SNOW LOAD
2. LOFT FLOOR FRAMING DESIGNED FOR 40 PSF TOTAL LOAD
3. DRIP EDGE AT ALL ROOF EDGES
4. OVERHANG ON GABLES TO BE 4" FOR QUALITY FINISH
5. WOOD SOFFIT NOT VENTED - VINYL SOFFIT VENTED



TWO STORY GARAGE
BUILDING SECTION



Architectural drawings available (Stamp and seal optional)

Vinyl Siding Colors



Vinyl Trim Colors



Paint Samples



Architectural & 3 Tab Asphalt Shingle Colors



Metal Roofing Colors



Duratemp Shed Aluminum Trim



COLORS MAY VARY

Vinyl Shutter Colors

Red
Clay
Blue
White
Black
Green
Brown
Creme
Almond
Dark Gray

Colored Steel Doors

To match vinyl siding
Clay
Sand
Sandalwood
Creme
Almond
White



Be sure to ask about our other outdoor structures



The Eagle Collection
Sheds and Poolhouses



Home Sweet Home Catalog
Playhouses

*We've gotten so many compliments on our "office" we are giving people your name!
We can't say enough how fortunate we were to find you!
Thank You!
The Ebersoles*

*Your professional manners and skilled workmanship are to be admired. You are on our list of "Best of the Best" in building and delivery.
Thank you
Mr. & Mrs. Piccioni*